



# STAINLESS STEEL SLIDING DOOR STYLE ENCLOSED BASE WORK TABLES



Flat Top



1 1/2" Backsplash



5" Backsplash



FEATURING BOLT-ON  
STAINLESS STEEL LEG

Item #: \_\_\_\_\_ Qty #: \_\_\_\_\_  
 Model #: \_\_\_\_\_  
 Project #: \_\_\_\_\_

## FEATURES:

**FLAT TOP** is furnished with a 1 5/8" sanitary rolled rim on the front and 1 5/8" square bend edges on the 2 sides and rear.

**1 1/2" SPLASH** is furnished with a 1 5/8" sanitary rolled rim on the front side and 1 5/8" square bend edges on the 2 sides and a 1 1/2" splash of single metal thickness on the rear side.

**5" SPLASH** is furnished with a 1 5/8" sanitary rolled rim on the front side and 1 5/8" square bend edges on the 2 sides and a 5" splash with a 1" return on the rear side.

**SLIDING DOORS** have recessed handles for ease in opening and closing.

Rear flush panel along the rear of the base unit.

## CONSTRUCTION:

All TIG welded. Exposed areas finished to match adjacent surfaces.

Entire Top is mechanically polished to a satin finish and is sound deadened.

Hat section secured to Top reinforces and maintains level working surface.

UNI-BODY DESIGN sides, back and fixed mid shelf (sold separately) are welded to form a single rigid structure.

Legs bolt on to table base.

## MATERIAL:

TOP is 14 gauge stainless steel type "304" series with galvanized understructure.

BODY is 18 gauge stainless steel type "430" series.

LEGS are stainless steel and include 1 1/2" adjustable hex foot.

	L	FLAT TOP	1 1/2" SPLASH	5" SPLASH	# of Doors	Approx. Wt.	Approx. Cu. Ft.
<b>24" WIDE</b>	48"	CB-SS-244	CF-SS-244	CK-SS-244	2	183 lbs.	38
	60"	CB-SS-245	CF-SS-245	CK-SS-245	2	235 lbs.	47
	72"	CB-SS-246	CF-SS-246	CK-SS-246	2	275 lbs.	56
	84"	CB-SS-247	CF-SS-247	CK-SS-247	4	335 lbs.	66
	96"	CB-SS-248	CF-SS-248	CK-SS-248	4	375 lbs.	74
	108"	CB-SS-249	CF-SS-249	CK-SS-249	4	410 lbs.	83
	120"	CB-SS-2410	CF-SS-2410	CK-SS-2410	4	450 lbs.	92
	144"	CB-SS-2412	CF-SS-2412	CK-SS-2412	4	495 lbs.	109
<b>30" WIDE</b>	48"	CB-SS-304	CF-SS-304	CK-SS-304	2	210 lbs.	45
	60"	CB-SS-305	CF-SS-305	CK-SS-305	2	245 lbs.	55
	72"	CB-SS-306	CF-SS-306	CK-SS-306	2	290 lbs.	66
	84"	CB-SS-307	CF-SS-307	CK-SS-307	4	350 lbs.	76
	96"	CB-SS-308	CF-SS-308	CK-SS-308	4	395 lbs.	87
	108"	CB-SS-309	CF-SS-309	CK-SS-309	4	430 lbs.	97
	120"	CB-SS-3010	CF-SS-3010	CK-SS-3010	4	490 lbs.	107
	144"	CB-SS-3012	CF-SS-3012	CK-SS-3012	4	555 lbs.	128
<b>36" WIDE</b>	48"	CB-SS-364	CF-SS-364	CK-SS-364	2	225 lbs.	53
	60"	CB-SS-365	CF-SS-365	CK-SS-365	2	270 lbs.	65
	72"	CB-SS-366	CF-SS-366	CK-SS-366	2	315 lbs.	77
	84"	CB-SS-367	CF-SS-367	CK-SS-367	4	383 lbs.	90
	96"	CB-SS-368	CF-SS-368	CK-SS-368	4	425 lbs.	102
	108"	CB-SS-369	CF-SS-369	CK-SS-369	4	470 lbs.	114
	120"	CB-SS-3610	CF-SS-3610	CK-SS-3610	4	515 lbs.	126
	144"	CB-SS-3612	CF-SS-3612	CK-SS-3612	4	605 lbs.	151

Mid Shelves Are Available.

To Add a Fixed Mid Shelf, Add "M" After each Model Number.

Upgrade to Adjustable Mid Shelf. Add TA-116.



Customer Service Available To Assist You 1-800-645-3166 8:30 am - 7:00 pm E.S.T.

For Orders & Customer Service:

Email: customer@advancetabco.com or Fax: 631-242-6900

For Smart Fabrication™ Quotes:

Email: smartfab@advancetabco.com or Fax: 631-586-2933

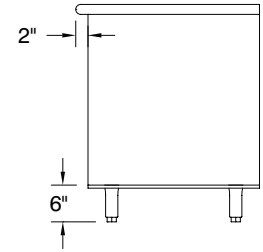
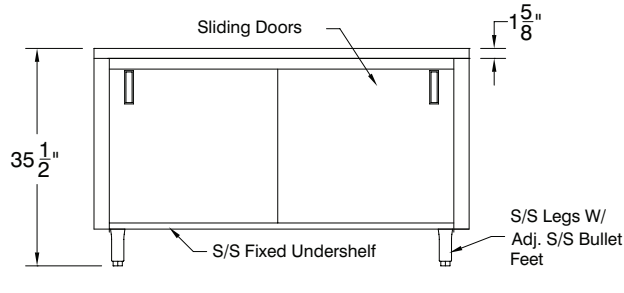
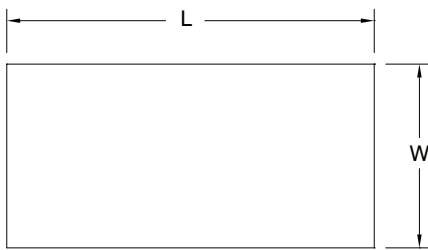
# DETAILS and SPECIFICATIONS

TOL ± .500"

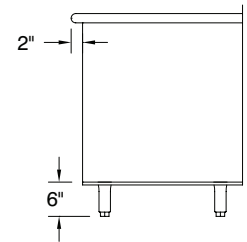
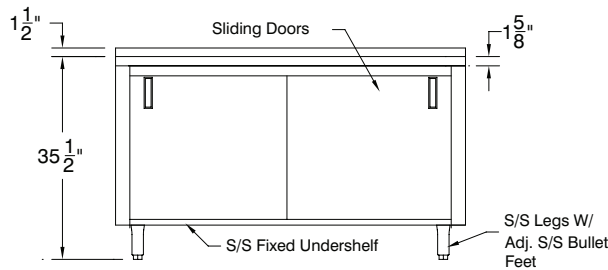
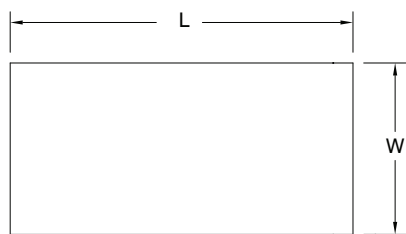
Units 7' and larger are furnished with 6 legs.

ALL DIMENSIONS ARE TYPICAL

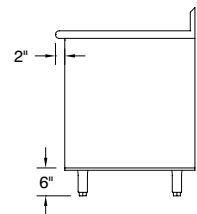
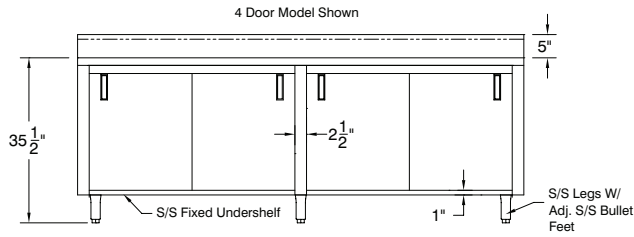
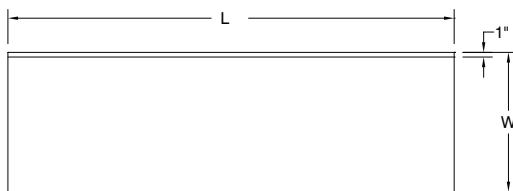
## CB-Series Flat Top



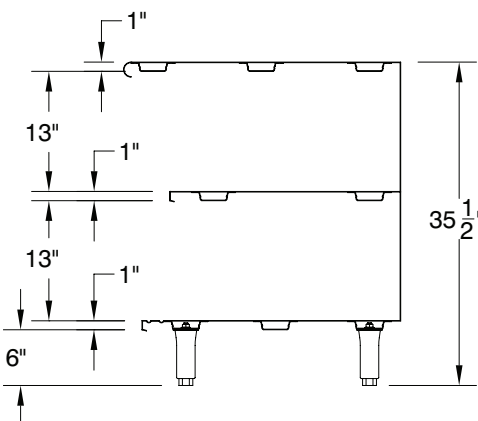
## CF-Series 1 1/2" Rear Splash



## CK-Series 5" Rear Splash

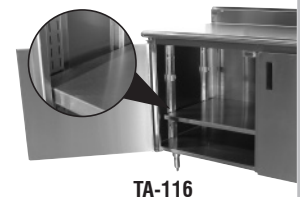


## OPTIONAL MID SHELF DETAILS



## OPTIONAL ENCLOSED BASE MODIFICATIONS & ACCESSORIES

- **TA-19L** ..... Replacement Bolt-on Leg With Flanged Bullet Foot
- **TA-20L** ..... Replacement Bolt-on Leg
- **TA-42** ..... Interior Partition, 2-1/2" x 30" (each)
- **TA-46** ..... Door Locks
- **TA-54** ..... Removable Kick Plate
- **TA-116**..... Cabinet Mid Shelf\* (Sold Separately)
- **TA-118**..... Partial Mid Shelf (Sold Separately)
- **TA-255P** ..... 5" Heavy Duty Polyurethane Casters (Set of 4 - 2 w/ Brakes)
- **TA-255AP**.... 5" Heavy Duty Polyurethane Casters (Set of 6 - 2 w/ Brakes)



\*Shelves Over 36" In Length Require Multiple Sections With Center Partition.

