

# SUBMITTAL DATA SHEET

## Dewatering Pumps Electric & DC Powered | Engine Driven Cast Iron Sewage | Trash Pumps

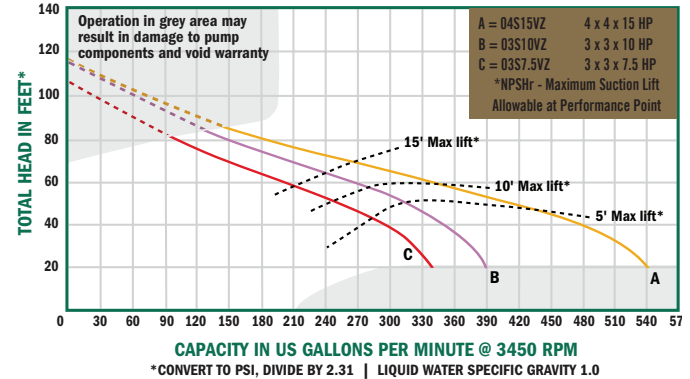
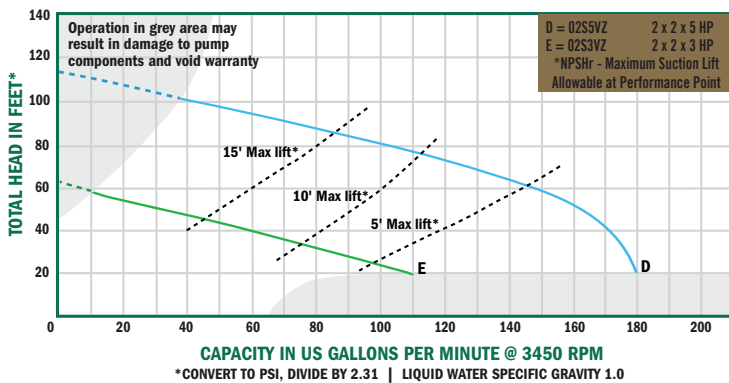


A.Y. McDonald cast iron sewage/trash pumps are designed for trouble free and economical handling of solid laden liquids and slurries. Pumps are available in three NPT port sizes; 2", 3", and 4". Cast iron construction with two vane stainless steel self-cleaning impellers, silicon carbide mechanical seals for abrasion resistance and Buna-N o-rings and check valves. Built-in check valve allows pump to reprime automatically in an open system, without a foot valve.

A.Y. McDonald Sewage/Trash pumps will easily handle liquids containing sewage, stone, sticks, mud, and other solids. Minimum liquid requirement must be above 85%. Failure to do so may damage pump and void warranty. These pumps are reliable, cost effective, and low maintenance. For use with non-flammable liquids which are compatible with pump component materials.

### Application:

The solids handling capabilities of the pumps make them ideally suited for a variety of industrial applications including: sewage treatment, canneries, chemical processing, wineries, tanneries, meat packing, breweries, pulp, wood chips, process water, sludge and slime, waste water, white water, and other applications.



### Specifications

Model No.	HP	Phase	ENC	Frame	Voltage @60 Hz+	Full Load Amps	Max Solids	Ship Wt.
02S3VZ	3	3	TEFC	56J	230/460	8/4	1"	87 lbs
02S3V	3	1	TEFC	56J	230	16	1"	94 lbs
02S5VZ	5	3	TEFC	184JM	230/460	17/9	1"	146 lbs
02S5V	5	1	TEFC	184JM	230	20	1"	170 lbs
03S7.5VZ	7-1/2	3	TEFC	184JM	230/460	22/11	1-1/2"	200 lbs
03S7.5V	7-1/2	1	TEFC	215JM	230	31	1-1/2"	255 lbs
03S10VZ	10	3	TEFC	215JM	230/460	26/13	1-1/2"	215 lbs
03S10V	10	1	TEFC	215JM	230	40	1-1/2"	285 lbs
04S15VZ	15	3	TEFC	215JM	230/460	47/24	2"	287 lbs

### SUBMITTAL INFORMATION

- Cast iron construction
- Silicon carbide/viton mechanical seal
- 2", 3", & 4" NPT port sizes
- Self-priming up to 20'
- Maximum temperature 180°F
- Maximum working pressure 150 PSI
- Stainless steel semi-open, clog resistant impeller
- Built in Buna-N check valve
- Removable cast iron volute/wearplate
- Easy cleanout design
- Pull-from-rear design
- 3" & 4" models feature front cleanout
- Available with 3 to 15 HP totally enclosed fan cooled (TEFC) electric motors
- Single and three phase, 3450 RPM Motors
- Seal flush port provided on 5 HP and larger

**NO-LEAD:** The weighted average of the wetted surface of this no-lead product contacted by consumable water contains less than one quarter of one percent (0.25%) lead.



**A.Y. McDonald Mfg. Co.**  
P.O. Box 508  
Dubuque, IA 52004-0508

**Toll Free:** 1-800-292-2737  
**Fax:** 1-800-832-9296  
**Hours:** 7:00 a.m. - 5:00 p.m., CST

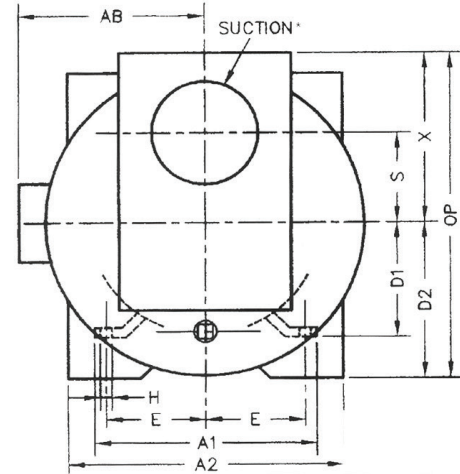
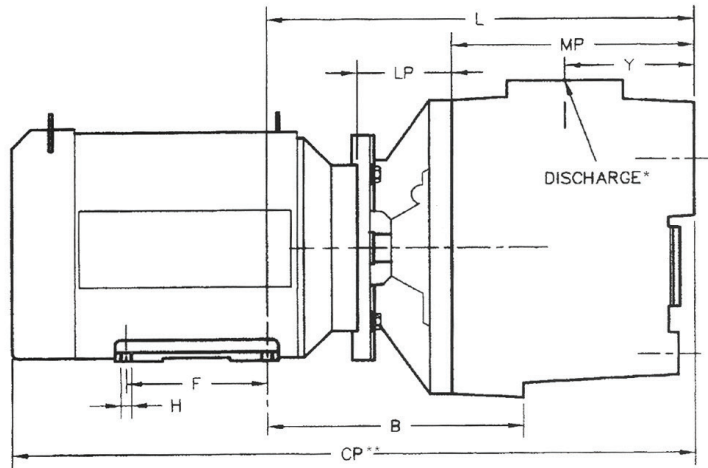
[sales@aymcdonald.com](mailto:sales@aymcdonald.com)  
[www.aymcdonald.com](http://www.aymcdonald.com)

A.Y. McDonald considers the information on this assembly drawing correct when published. Item and option availability, including specifications, are subject to change without notice.

**Submitted by:**

# SUBMITTAL DATA SHEET

## Dewatering Pumps Electric & DC Powered | Engine Driven Cast Iron Sewage | Trash Pumps



### Dimensions

Model No.	HP	SUC*	DIS*	CP**	A1	Width	AB	B	D1	D2	E	F	H	L	LP	MP	OP	S	X	Y
02S3VZ	3	2"	2"	21.0	6.5	9.0	5.0	N/A	3.5	N/A	2.4	3.0	0.88 X 0.34	11.0	2.3	6.1	8.2	2.1	4.7	3.1
02S3V	3	2"	2"	21.0	6.5	9.0	5.0	N/A	3.5	N/A	2.4	3.0	0.88 X 0.34	11.0	2.3	6.1	8.2	2.1	4.7	3.1
02S5VZ	5	2"	2"	25.0	6.4	13.5	8.6	9.7	4.5	5.2	3.7	5.5	0.4	14.8	4.4	6.9	10.	2.1	4.7	3.1
02S5V	5	2"	2"	25.0	6.4	13.5	8.6	9.7	4.5	5.2	3.7	5.5	0.4	14.8	4.4	6.9	10.	2.1	4.7	3.1
03S7.5VZ	7.5	3"	3"	26.5	6.4	15.5	9.4	10.0	4.5	5.7	3.7	5.5	0.4	16.5	3.7	9.3	12.4	3.5	6.6	5.0
03S7.5V	7.5	3"	3"	31.0	9.5	15.5	9.4	10.8	5.2	5.7	4.2	7.0	0.4	17.4	3.7	9.3	12.4	3.5	6.6	5.0
03S10VZ	10	3"	3"	31.0	9.5	15.5	9.5	10.8	5.2	5.7	4.2	7.0	0.4	17.4	3.7	9.3	12.4	3.5	6.6	5.0
03S10V	10	3"	3"	31.0	9.5	15.5	9.5	10.8	5.2	5.7	4.2	7.0	0.4	17.4	3.7	9.3	12.4	3.5	6.6	5.0
04S15VZ	15	4"	4"	32.0	9.5	15.5	9.5	11.2	5.2	6.1	4.2	7.0	0.4	18.5	3.7	10.3	14.3	3.5	8.1	6.6

(\*) Standard NPT (female) pipe thread.

(\*\*) This dimension may vary due to motor manufacturer's specifications.

(+) 3-Phase motors can operate on 50 Hz. (Those will change Full Load Amps, Service Factor, RPM and Priming Capabilities)

NOTE: Dimensions have a tolerance of  $\pm 1/8"$ .

NOTE: Electric supply for ALL motors must be within  $\pm 10\%$  of nameplate voltage rating (Ex. 230V  $\pm 10\%$  = 207 to 253)

**NO-LEAD:** The weighted average of the wetted surface of this no-lead product contacted by consumable water contains less than one quarter of one percent (0.25%) lead.



**A.Y. McDonald Mfg. Co.**  
P.O. Box 508  
Dubuque, IA 52004-0508

**Toll Free:** 1-800-292-2737  
**Fax:** 1-800-832-9296  
**Hours:** 7:00 a.m. - 5:00 p.m., CST

[sales@aymcdonald.com](mailto:sales@aymcdonald.com)  
[www.aymcdonald.com](http://www.aymcdonald.com)

A.Y. McDonald considers the information on this assembly drawing correct when published. Item and option availability, including specifications, are subject to change without notice.

**Submitted by:**