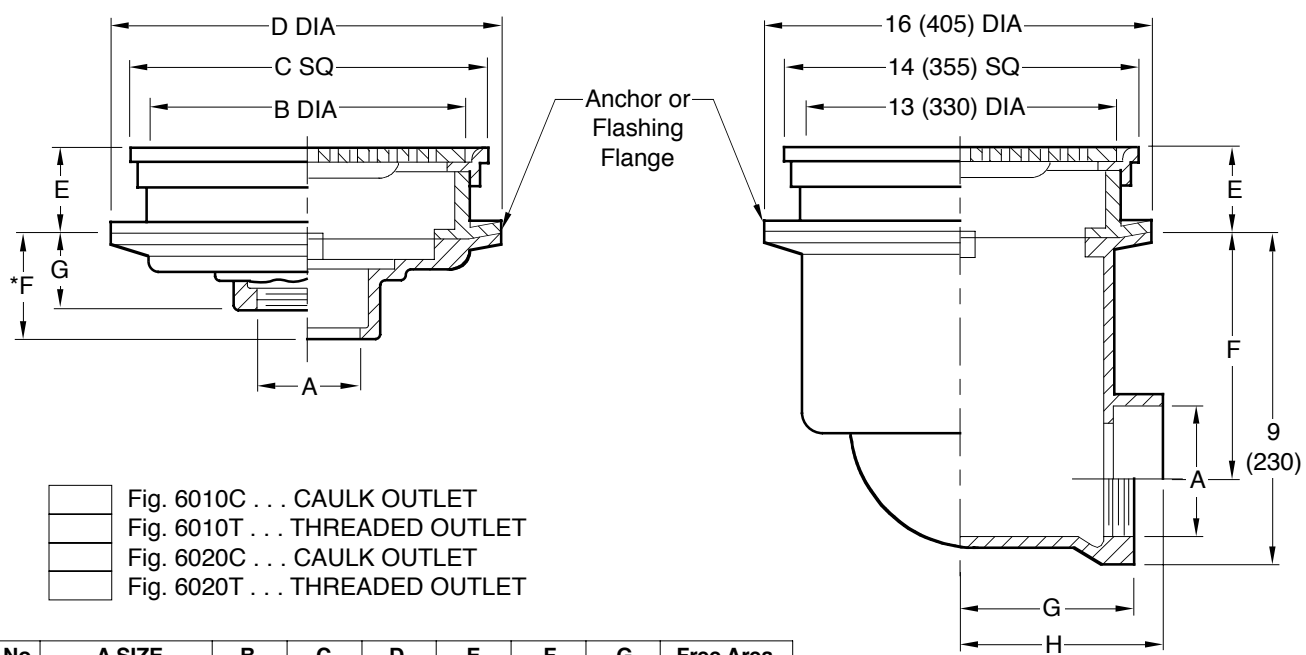


SPECIAL PURPOSE DRAINS



- Fig. 6010C . . . CAULK OUTLET
- Fig. 6010T . . . THREADED OUTLET
- Fig. 6020C . . . CAULK OUTLET
- Fig. 6020T . . . THREADED OUTLET

- Fig. 6025C . . . CAULK OUTLET
- Fig. 6025T . . . THREADED OUTLET

Fig. No.	A SIZE	B DIA	C SQ	D DIA	E	F *	G	Free Area
6010	02(50), 03(75), 04(100)	7 1/2 (190)	8 1/2 (215)	11 1/2 (290)	1 3/4 (44)	3 1/2 (89)	2 (51)	13 SQ IN (84) SQ CM
6020	04(100), 05(125), 06(150)	12 3/4 (325)	14 (355)	15 3/4 (400)	2 1/2 (64)	3 3/4 (95)	2 (51)	42 SQ IN (271) SQ CM

A SIZE	E	F	G	H	Free Area
04 (100)	2 1/2 (64)	5 7/8 (149)	6 (150)	6 3/4 (170)	42 SQ IN (271) SQ CM
05 (125)	2 1/2 (64)	5 (125)	6 5/8 (168)	7 3/4 (195)	42 SQ IN (271) SQ CM
06 (150)	2 1/2 (64)	4 1/2 (115)	6 7/8 (175)	7 3/4 (195)	42 SQ IN (271) SQ CM

* Same Dimension for Caulk or NO-HUB, 2" (51) for Threaded.

NOTE: 04"(100) size requires a transition collar (not shown in above illustration) which fits between the body and collar. Above illustration is typical for the 05"(125) & 06"(150) sizes.

ΔΔΔ FREE caulk support strap available - 02(50), 03(75), 04"(100) sizes.

REGULARLY FURNISHED:
 Duco Cast Iron Body and Anchor Flange with Secured Chrome Plated Bronze Grate and Frame.

- VARIATIONS:**
- NO-HUB Adaptor (Specify Fig. 2646Y) (6020, 6025 only)
 - Vandal Proof Screws -U
 - Y NO-HUB Outlet (6010 only)

- OPTIONAL MATERIALS:**
- Duco Cast Iron Grate -CI
 - Galvanized Cast Iron -G
 - Nickel Bronze Top -NB
 - Polished Bronze Top -PB

NOTE: This product does not conform to or meet the requirements of ASME Standard No. A112.19.8-2007, titled "Suction Fittings for Use in Swimming Pools, Wading Pools, Spas, and Hot Tubs." This product shall not be used in any installation in swimming pools, wading pools, spas, hot tubs as well as other aquatic facilities. Due to the potential endangerment from arduous and forceful suction, entrapment or entanglement regardless of whether it is hair, head, limbs or other body parts, this product is prohibited from installation in these applications.

NOTE: Dimensions shown in parentheses are in millimeters.

DRAWING NUMBER S6010

SCALE: NONE

DATE: 3-23-83

APPROVED BY: SJM

CHECKED BY: DT

DRAWN BY: BS

FIGURE NUMBER 6010,6020,6025

DIMENSIONS ARE SUBJECT TO MANUFACTURERS TOLERANCE AND CHANGE WITHOUT NOTICE

WE CAN ASSUME NO RESPONSIBILITY FOR USE OF SUPERSEDED OR VOID DATA

F	12/16/08	Revised Chart	RN	CL	WEIGHT POUNDS	VOLUME CUBIC FEET	FIGURE NUMBER 6010,6020,6025
D	12/08/08	Revised Variations	RN	CL			
C	11/20/08	Added ASME Note	JJ	CL			
	7-7-95	Added Millimeters	EMB	BS			
REV.	DATE	DESCRIPTION	BY	CKD. BY			